

DL06 - Great Fit For Flexible Analog Control

Top six reasons to use the DL06 for analog control:

1 Two-for-one pricing

Combine our analog I/O modules with any DL06 for the lowest-cost analog control in its class. You can buy two DL06 systems, with any one of our analog modules, for the price of one of our competitors' systems. Check out the chart at the bottom of this page to compare.

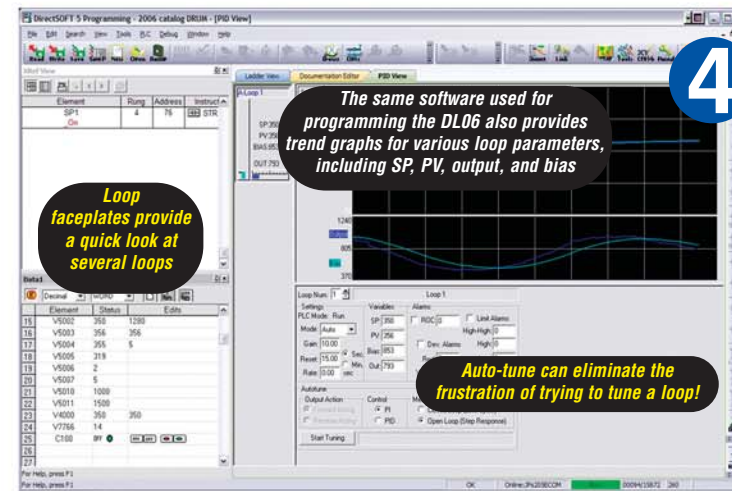
2 C-more panels offer a low-cost window into your application

Our C-more panels have some of the best features in the market for process HMI applications. Key features include a Factory Symbol Library, PID faceplates, recipe download objects, meters, trend graphs, bar graphs, and much more.

3 Direct wiring to the most common analog devices

With the analog option modules, the DL06 offers direct wiring to the most common analog devices such as pressure and level transmitters, proportional valves, AC drives, panel meters, etc.

- 4-20 mA, 0-20 mA, input and output ranges
- 0-5 V and 0-10 V input and output ranges
- All ranges jumper selectable



4 Eight PID loops with "auto-tune"

The DL06 supports its great analog capabilities with PID and floating point math at no additional charge. It also features:

- Automatic loop scheduling
- Charts to fill out for alarms and ramp/soak profiles
- **DirectSOFT** programming software includes the loop tune screen with trending (as shown)
- Auto-tune feature allows CPU to determine the near-optimum loop settings (based upon the time constant of your process at the time auto-tune procedure is performed)



Program, troubleshoot, or collect data over the telephone line via our industrial modem

5 Powerful built-in and expansion communication

Combine a DL06 AC or DC-powered unit with our industrial telephone modem and avoid the high cost of an advanced Remote Telemetry System (RTU) that probably has a PLC as its brain anyway. The DL06, with its configurable Port 2 timing settings, easily accommodates our industrial telephone modem for almost any remote dial-up application like pump stations, level control and monitoring and even golf course irrigation. This combination can really save you money on service calls, data acquisition, up-and-down-time trending and more. And if you need additional ports, check out the new D0-DCM module.

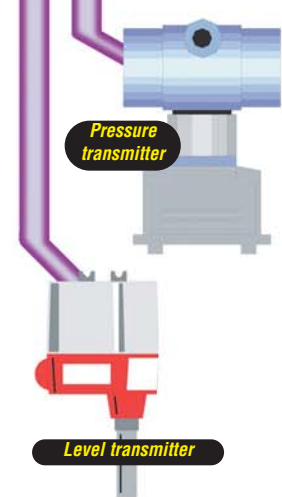


6 Our analog modules do not disappoint

These little analog modules are the smallest and lowest-priced in the industry. There are seven models to choose from, with flexible features, including 4-20 mA or 0-20 mA, and 0-5V or 0-10V input and output ranges. All ranges are jumper selectable and include removable terminal blocks.



AC Drive



Pressure transmitter

Level transmitter

CHECK OUT OUR PRICES

Analog Expansion I/O	AutomationDirect DL05	Allen-Bradley MicroLogix 1200	GE Fanuc VersaMax Micro	Mitsubishi FX2N	Siemens S7-226
Analog Input Base System (DC Inputs/Relay Outputs) + 4-channel Analog Input Module	\$229 + \$79 \$308	\$687 + \$304 \$991	N/A	\$595 + \$315 \$910	\$655 + \$195 \$850
Analog Input/Output Combination with base system (DC Inputs/Relay Outputs) + 2-channel In/1-channel Out	N/A	N/A	\$610 (only integrated on 23 pt. I/O model)	\$595 + \$255 \$850	\$655 + \$250 \$905
2-channel In/2-channel Out	\$229 + \$149 \$378	\$687 + \$304 \$991	N/A	N/A	N/A
4-channel In/2-channel Out	\$229 + \$185 \$414	N/A	N/A	N/A	N/A

All prices are U.S. list prices. AutomationDirect prices are from September 2006 Price List. Allen-Bradley prices are from Publication ACIG-PL001F-EN-P September 2005. GE Fanuc prices are from www.gesupply.com 6/26/06. Siemens prices from Siemens Energy & Automation Simatic S7-200 Second Generation Products Pricing Edition 2G 07.03. Mitsubishi prices from Mitsubishi Electric F-Series PLC Price List, August 2002.



Price Check

FO-04AD-1 4-ch. mA in	\$79.00
FO-04AD-2 4-ch. voltage in	\$115.00
FO-2AD2DA-2 2-ch. in/2-ch. volt out	\$149.00
FO-4AD2DA-1 4-ch. in/2-ch. mA out	\$185.00
FO-4AD2DA-2 4-ch. in/2-ch. volt out	\$209.00
FO-04RTD 4-ch. RTD in	\$199.00
FO-04THM 4-ch. thermocouple in	\$199.00

- AutomationDirect
- PLC Overview
- DL05/06 PLC
- DL105 PLC
- DL205 PLC
- DL305 PLC
- DL405 PLC
- Field I/O
- Software
- C-more HMIs
- Other HMI
- AC Drives
- Motors
- Steppers/Servos
- Motor Controls
- Proximity Sensors
- Photo Sensors
- Limit Switches
- Encoders
- Pushbuttons/Lights
- Process
- Relays/Timers
- Comm.
- TB's & Wiring
- Power
- Enclosures
- Appendix
- Part Index